

Because life is

PettyTM
Real

9 Holmsley Street
Burnley
BB10 4DY



For Sale

Asking Price £105,000

- Attention First Time Buyers & Investors.
- Spacious Three Bedroom End Terrace.
- Two Large Reception Rooms.
- Kitchen Dining Space To The Rear.
- Three Piece Family Bathroom.
- Offers Huge Potential!

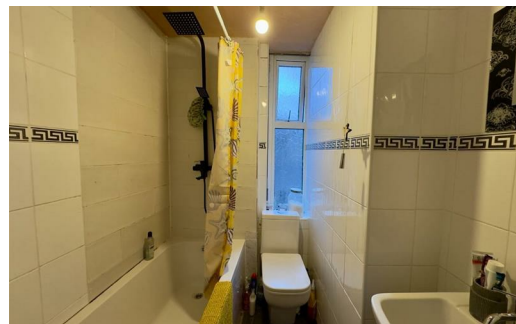
- The Stunning Towneley Park Within Walking Distance.
- Highly Regarded Primary & High Schools Close By.
- Located A Short Walk From Turf Moor & Burnley Town Centre.
- Leasehold | Council Tax Band: A | EPC Rating: D.



An excellent opportunity for first-time buyers and investors, this three-bedroom end-terrace home on Holmsley Street offers flexible and spacious accommodation. The ground floor features two reception rooms and a kitchen-dining area to the rear, ideal for modern living. Well positioned for local amenities including Townley Park, Turf Moor, Burnley town centre, and popular local schools.



Holmsley Street, Burnley



These particulars, whilst believed to be accurate are set out as a general outline only for guidance and do not constitute any part of an offer or contract. Intending purchasers should not rely on them as statements of representation of fact, but must satisfy themselves by inspection or otherwise as to their accuracy. No person in this firm's employment has the authority to make or give any representation or warranty in respect of the property.

4 Manchester Road, Burnley, Lancashire, BB11 1HH

T.

burnley.sales@pettyreal.co.uk burnley.lettings@pettyreal.co.uk
property.management@pettyreal.co.uk

www.pettyreal.co.uk